

PIX-E5

Recording Field Monitor for Professionals

VIDEO DEVICES PIX-E5



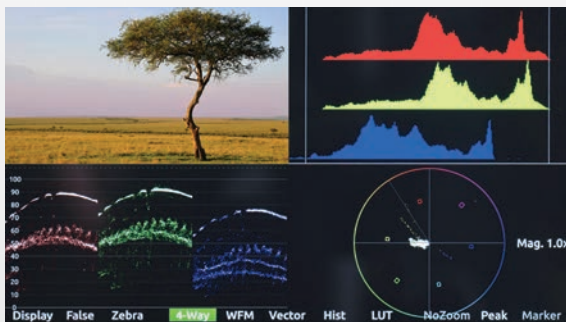
4K 1920x1080



Compact 4K recording monitor.

Advanced Monitoring. The PIX-E5 excels in providing what discerning cinematographers and videographers need most: high-resolution, color-accurate, sunlight-viewable monitoring, with a wide 179° angle of view.

With the press of a button or a tap on the touchscreen, the PIX-E5's impressive suite of monitoring features provide all of the tools necessary for unrivaled focusing speed, exposure assistance and framing.



Four-Way Monitoring (Clockwise: Video Feed, Histogram, Vector Scope, Waveform)

Unsurpassed Recording. The 4K-compatible PIX-E5 is the first on-camera monitor to offer the full range of Apple ProRes codecs, including the highest quality Apple ProRes 4444 XQ, a 12-bit codec designed to preserve the detail in wide dynamic range imagery captured by today's high performance digital image sensors. Files are directly recorded to removable mSATA drive.

Rugged Durability. The camera-mount PIX-E5, with its compact, die-cast metal chassis and LCD protected by Gorilla Glass 2, is designed to withstand the most extreme and demanding production environments.

KEY FEATURES

PIX-Assist™ Monitoring Tools

- TapZoom™ for Rapid Focus
- LUTs
- Scopes including: Waveform, Histogram, and Vector Scope
- False Colors and Zebras for Setting Exposure
- Guide Markers for Framing
- Peaking
- Anamorphic Desqueeze (4:3)
- Full HD, Ultra-Bright IPS Touchscreen
- Real Buttons for Fast Tactile Control

Recording Capabilities

- 4K Recording
- Apple® ProRes 4444 XQ, 12-Bit

Solid Construction

- Robust Die-Cast Metal Chassis
- Virtually Indestructible Gorilla® Glass 2



PIX-E5 Left Panel



PIX-E5 Right Panel

PIX-E5

Recording Field Monitor for Professionals

SPECIFICATIONS

Display

LCD Size	5-inch
Resolution & ppi	1920 x 1080, 441 ppi
Luminance (Brightness)	500 nit
IPS with Gorilla® Glass 2	✓

PIX-Assist Monitoring Tools

TapZoom	2x, 4x
LUTs	S-Log 2 & 3, Canon Log, V-Log, plus custom LUTs (.cube)
Peaking Filter	✓
Guide Markers	✓
False Colors	4-step, 12-step
Zebras	Zebras 1, Zebras 2

Scopes

Waveform Monitor	Luma (White, Green) RGB (Overlay, Parade)
Vector Scope	✓
Histogram	Luma (White, Green) RGB (Overlay, Parade)
Four-Way Monitoring (Video Feed, Histogram, Vector Scope, WFM)	✓

Recorder

Max Resolution/Frame Rate	120 fps (HD); 30 fps (4K UHD, 4K DCI)
Codec	Apple ProRes Proxy to Apple ProRes 4444 XQ
File Transfer to Computer	via SpeedDrive USB 3.0 interface

Media

SpeedDrive – Enclosure plus approved 240 GB mSATA Solid State Drive
SpeedDrive – Enclosure only (compatible with third-party 128 GB to 1 T mSATA SSDs)

Video

Inputs	6G-SDI, 3G-SDI (Level A & B), HDMI
Outputs	HD-SDI, HDMI

Audio

Max No. Tracks	8
Analog Inputs	Two unbalanced line, 3.5mm Two balanced mic/line, XLR (via optional PIX-LR)
Embedded Audio Inputs	8 SDI and Two HDMI
Headphone Output	✓

Remote Control & Timecode

Record Start/Stop Flags	SDI, HDMI
Embedded Timecode	SDI, HDMI, 3.5 mm Line In

Powering, Weight, & Dimension

Power Source	EXT DC (10-34V), (optional) Two Sony L-mount batteries
Weight	1 lb (16oz)
Dimensions	5.4 in x 3.4 in x 1.6 in (WxHxD) 137.1 mm x 86.3 mm x 40.6 mm (WxHxD)

ACCESSORIES

(PIX-E5 package includes monitor and power supply only. Accessories sold separately.)



SpeedDrive™* is an industry standard mSATA drive contained within a custom-designed enclosure. The SpeedDrive, which plugs directly into the PIX-E, doubles as a USB 3.0 thumb drive for very high speed offload to any computer without the need for a special cable or drive docking station.

Two SpeedDrive options are available: a 240 GB SpeedDrive and an Enclosure-Only version that allows the user to choose and easily fit any size of mSATA drive. mSATA drives are available in sizes ranging from 128 GB to 1 TB.

*SpeedDrive options are purchased separately



PIX-LR audio interface is a screw-on accessory that provides PIX-E monitors with two XLR inputs and outputs, featuring Sound Devices-caliber mic preamps, hyper-accurate LED metering, and dedicated transport and gain controls.



PIX-E5/E5H KIT includes a hard case, sun hood, articulating arm, two 240 GB SpeedDrives, two Sony-compatible L-mount batteries, the PIX-USB3 Y-cable, and video I/O cables, two right-angle HDMI adapters, two right-angle BNC adapters
PIX-E CASE, alone, available as well.

SOUND  DEVICES

Post Office Box 576
E7556 State Rd. 23 and 33
Reedsburg, Wisconsin 53959 USA
+1 608.524.0625 main

Features, nomenclature, and specifications subject to change.

© 2015, Sound Devices, LLC

Rev. 5 (09/15)