

Firmware Revision Notice Version 2.30

This notice applies to firmware for the PIX 250i, PIX 260i, and PIX 270i recorders. This document describes new features in version 2.30 of the firmware as well as changes to existing features that might have become available after the products' user guides were published. Fixes are detailed on the download webpage.

The most up-to-date documentation for your Sound Devices product is available online at:
<http://www.videodevices.com/downloads/>.

New Features

This section provides information on new features. Not all features apply to every PIX recorder. The products to which a feature applies are provided in brackets beside each header.

Non-Native Files [PIX 260i, PIX 270i]

This version of firmware supports frame-accurate playback of non-native files on grouped PIX 270i (and PIX 260i) video decks. An example of a non-native file is a QuickTime MOV file created in non-linear editing suites, such as Avid®, Final Cut Pro®, or Adobe Premier®. This added functionality is useful for multi-screen presentations.

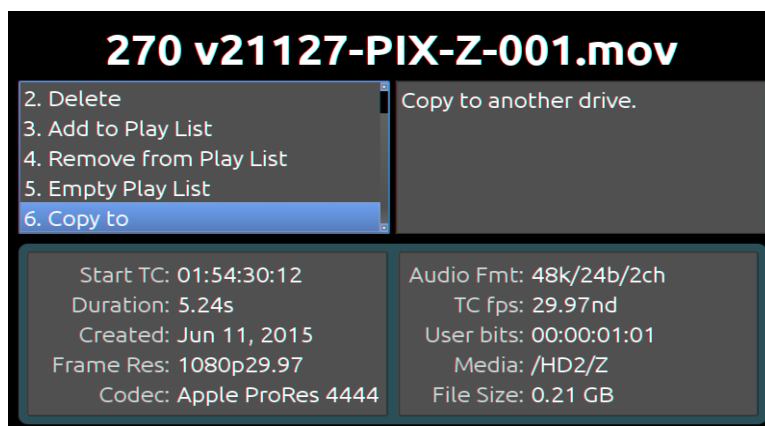
Additionally, all PIX video decks, including the PIX 250i, now recognize timecode stamps in non-native files, which is great for cueing up files for playback.

Drive-to-Drive Copying [PIX 250i, PIX 260i, PIX 270i]

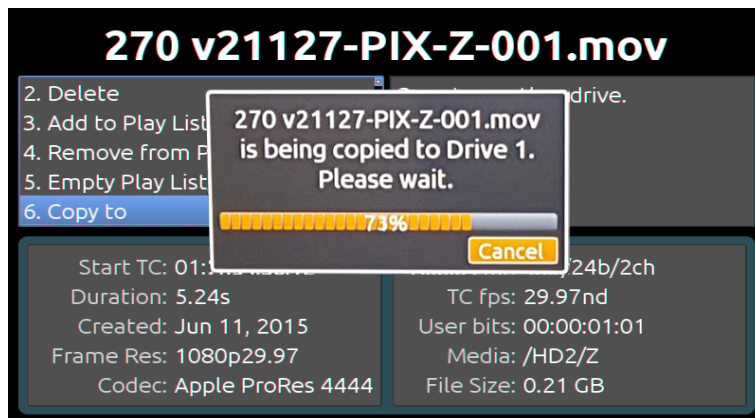
In this version of firmware, a new sub-menu option has been added, which enables copying of files and folders from one drive to another within a video deck, and without the need for a computer.

To copy from one drive to another:

1. Press the FILES button to view the Files List.
2. Turn the Control knob to scroll to the top of the screen and select the drive from which you want to copy.
3. Navigate to the file or folder you want to copy and do one of the following:
 - ▶ Press in the Control knob to select a file to copy.
 - ▶ Press and hold in the Control knob to select a folder to copy.
4. From the Details screen, scroll down the menu list and select Copy to.

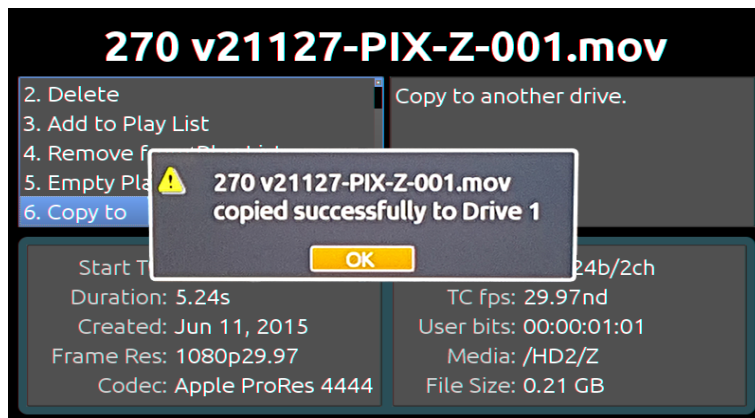


5. When the Copy dialog appears, select a drive from those available to which you want to copy the file or folder. A status bar will appear while copying is underway.




You can cancel the copy at any time.

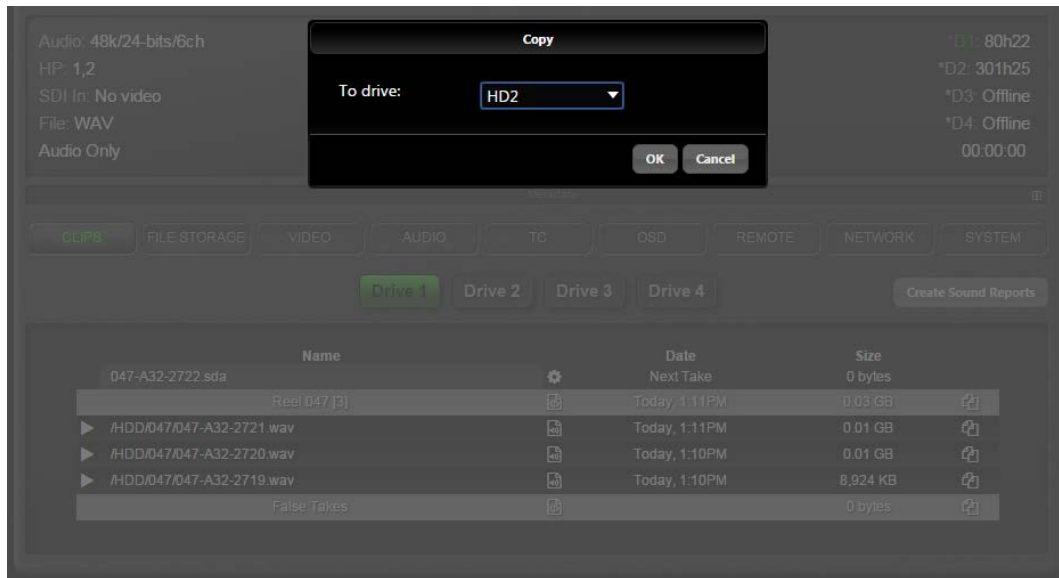
Copy times will vary based on file or folder sizes. When copying is completed, a dialog similar to the following image will appear.



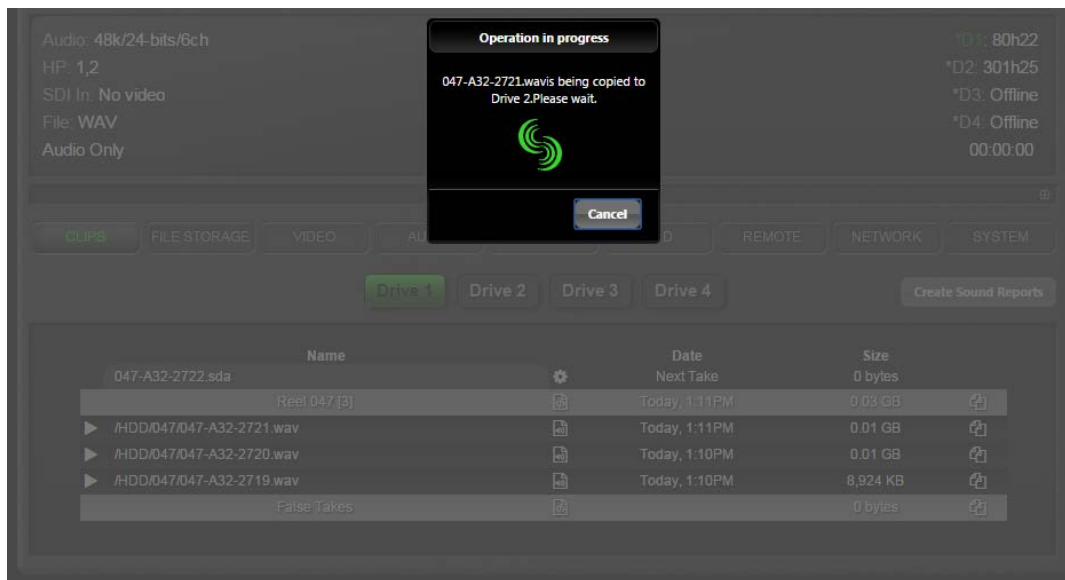
Copying files or folders across drives may also be initiated from the PIXNET™ web interface. The procedure for doing so is similar.

To initiate drive-to-drive copy from PIXNET:

1. From the CLIPS tab, select the drive from which you want to copy.
2. Click the Copy icon corresponding to the file or folder you want to copy.
 The Copy icon, an image of two overlapping sheets of paper, is located in the far right column.
3. When the Copy dialog appears, select the drive to which you want to copy and click OK.



A status dialog appears while copying is in progress. You can cancel at any time.



Firmware Changes

This section provides information on changes made to existing features in this version of firmware. The PIX recorders to which these changes apply are listed after each bullet point in brackets.

- Headphone Solo is no longer rippled through to other units in the group.
- DNxHD codec change to better handle noisy video signals.