

Firmware Revision Notice Version 2.20

This notice applies to firmware for the PIX 250i, PIX 260i, and PIX 270i recorders. This document describes new features in version 2.20 of the firmware as well as changes to existing features that might have become available after the products' user guides were published. Fixes are detailed on the download webpage.

The most up-to-date documentation for your Sound Devices product is available online at:
<http://www.videodevices.com/downloads/>.

New Features

This section provides information on new features. Not all features apply to every PIX recorder. The products to which a feature applies are provided in brackets beside each header.

PIX-E5/PIX-E5H Support [250, 260, 270]

This version of firmware supports playback of PIX-E5/PIX-E5H recorded Apple ProRes 422 and 4444 files, as well as the ability to playback ProRes 4444 files that contain an alpha channel.

Frame Accurate Group Playback [260, 270]

This version of firmware supports frame accurate group playback of non-native ProRes and DNxHD QuickTime files from non-linear editors (NLEs) including Avid, Final Cut Pro, and Adobe Premier.

Multichannel WAV Files [260, 270]

This version of firmware provides the ability to play multichannel .wav files recorded using other applications/devices, such as 6-Series, 7-Series, ProTools, Adobe Audition, Audacity, and so forth.

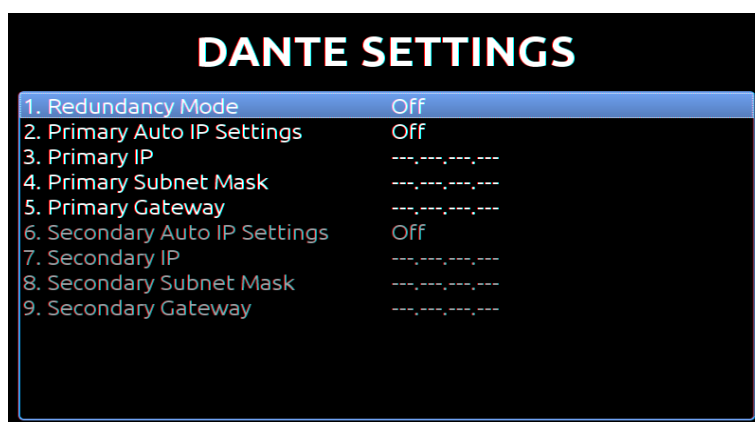
Dante Menu [260, 270]

In this version of firmware, a new sub-menu option called Dante Settings has been added, which provides access to Dante-related settings, such as Dante redundancy and primary and secondary IP settings.

These new settings let end-users view and manage primary and secondary IP information for Dante.

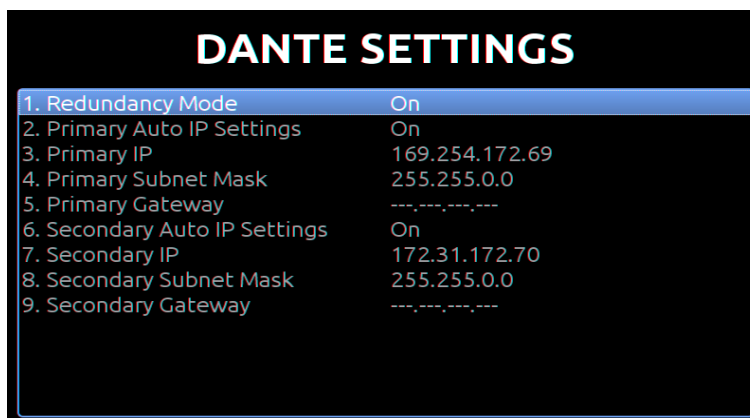
To access or adjust Dante settings:

1. Press the MENU button.
2. Select Network > Dante Settings. The Dante Settings screen appears.



3. Select any setting to adjust accordingly:

SETTING	DESCRIPTION
Redundancy Mode	Options include On and Off. When On, the recorder's primary and secondary Ethernet ports both transmit and receive Dante audio over separate networks. This provides a fail-safe of the Dante system should one of the networks fail. <i>Note: With Redundancy Mode, the two separate networks must be run completely separate from one another. Connect any computer running Dante Controller to the PIX recorder's PRI Ethernet network.</i>
Primary Auto IP Settings	Options include On and Off. When On, the IP settings will be provided automatically by a DHCP (recommended), or Link-local when no DHCP is present. When Off, the IP settings for primary IP, subnet mask, and gateway must be entered manually.
Primary IP	Use to manually set primary IP address for Dante.
Primary Subnet Mask	Use to manually set primary subnet mask.
Primary Gateway	Use to manually set the primary gateway IP address.
	<i>Note: When Primary Auto IP Settings is set to On, the Primary IP, Primary Subnet Mask, and Primary Gateway display the values obtained automatically.</i>
Secondary Auto IP Settings	Options include On and Off. When On, the IP settings will be provided automatically by a DHCP (recommended), or Link-local when no DHCP is present. When Off, the IP settings for secondary IP, subnet mask, and gateway must be entered manually.
Secondary IP	Use to manually set secondary IP address for Dante.
Secondary Subnet Mask	Use to manually set secondary subnet mask.
Secondary Gateway	Use to manually set the secondary gateway IP address.
	<i>Note: When Secondary Auto IP Settings is set to On, the Secondary IP, Secondary Subnet Mask, and Secondary Gateway display the values obtained automatically.</i>



DANTE SETTINGS	
1. Redundancy Mode	On
2. Primary Auto IP Settings	On
3. Primary IP	169.254.172.69
4. Primary Subnet Mask	255.255.0.0
5. Primary Gateway	---.---.---
6. Secondary Auto IP Settings	On
7. Secondary IP	172.31.172.70
8. Secondary Subnet Mask	255.255.0.0
9. Secondary Gateway	---.---.---

4. After making any change to a Dante setting and exiting the menu, the message "Reconfiguring Dante Network. Please Wait... OK" will appear.

Note: Changing Dante settings will result in a temporary Dante network interruption.

Metadata Grouping [260, 270]

All metadata edits ripple to grouped units for previous, current, next takes, including scene, take, notes, track names, circle status, false take and scene increments. This signifies the most comprehensive and advanced sharing of metadata between a master recorder and its backup, making the backup recorder a true mirror of the master.

Adjusting Audio Peak Hold Time [250, 260, 270]

This version of firmware offers a new AUDIO submenu that lets end-users adjust the peak hold time of the audio metering from zero (0) to 5 seconds.

To set peak hold time for audio metering:

1. Press the MENU button.
2. Select AUDIO > Audio Peak Hold Time.
3. Adjust the setting by 1 second increments from as low as zero, which equates to OFF, up to as high as a 5 second hold time.

New Playback ABS Menu [250, 260, 270]

This version of firmware offers a new SYSTEM submenu for setting the display of playback ABS.

To set playback ABS:

1. Press the MENU button.
2. Select SYSTEM > Playback ABS Display.
3. Choose from one of two options:

OPTION	DESCRIPTION
Cumulative Time	When this option is selected, the ABS Time clock will display the cumulative time by counting up from zero.
Remaining Time	When this option is selected, the ABS Time clock will display the "remaining time" by counting down from a clip's duration.

Additional Audio Improvements [250, 260, 270]

With this version of firmware, audio meters appear greyed out for unarmed tracks.

Additionally, the following new shortcuts, related to the Audio screen, have been added:

SHORTCUT	DESCRIPTION
AUDIO + LCD	Toggles on and off HP: Solo mode, which allows for soloing of each channel by highlighting the various tracks in the Audio screen. Repeat the shortcut to return to previous HP source.
FILES + Control knob	Arms/disarms tracks in the Audio screen

New Noise Reduction Option [250, 260, 270]

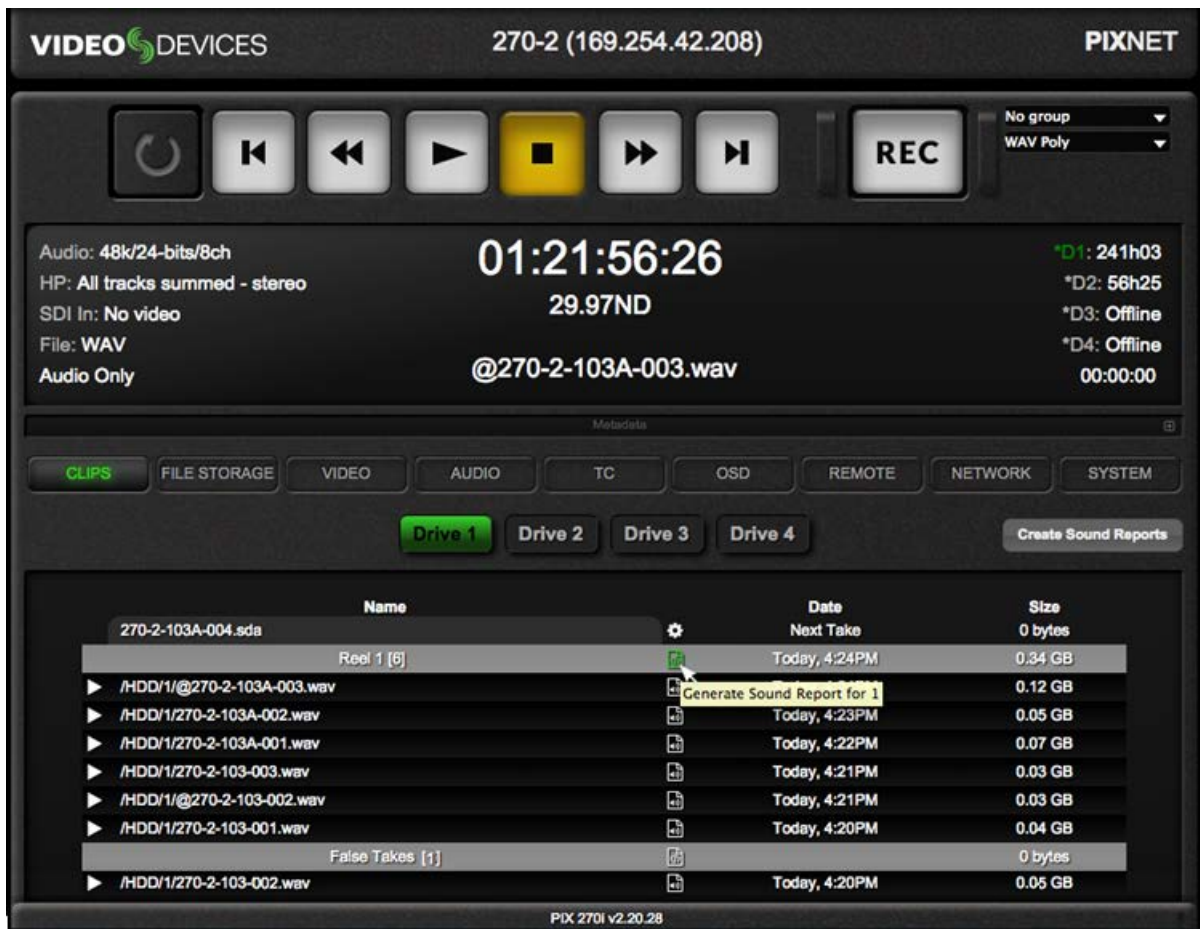
A new Noise Reduction option is available via the Video menu. When turned on, noise in incoming video signal is subtly reduced. This feature is turned off by default.

To turn on or off noise reduction:

1. Press the MENU button.
2. Select VIDEO > Noise reduction.
3. Choose from one of two options: On or Off.

Sound Reports from PIXNET [260, 270]

This version of firmware includes several enhancements to PIXNET, including a new False Take Command button, the ability to manage your phrase lists directly from PIXNET's Phrase List Manager, and the ability to generate and download sound reports the PIXNET interface.

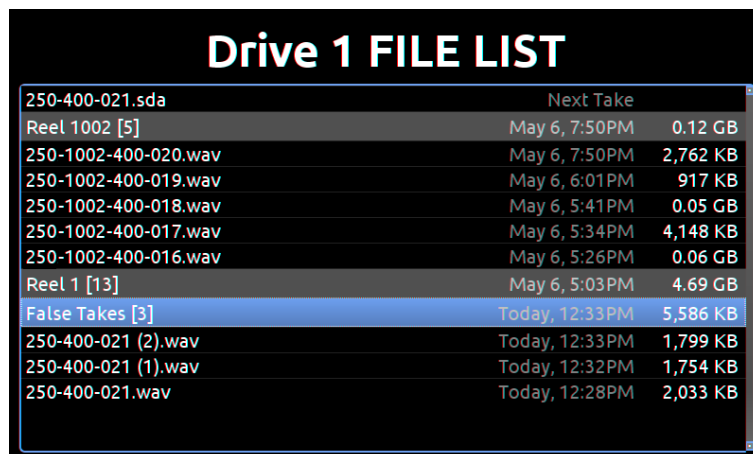


To mark a false take:



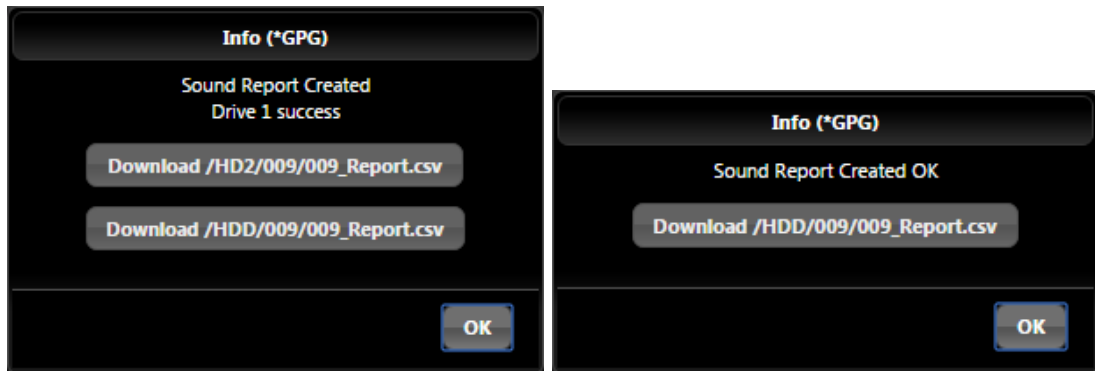
1. Stop the recording and press the False Take button.
2. Click OK when prompted to confirm deletion.

This actually moves the take to the False Takes folder, located at the bottom of the Clips tab.



To create sound reports from PIXNET:

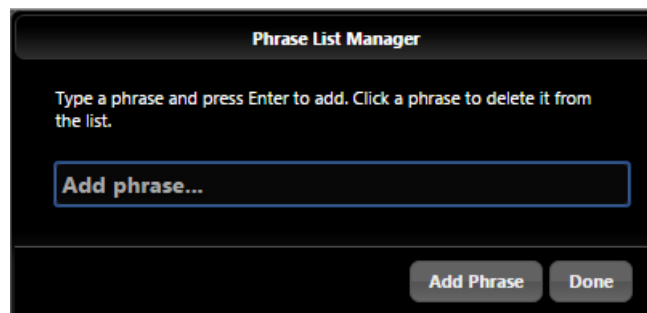
1. From the Clips tab, do either of the following:
 - ▶ Click the Create Sound Reports button. This creates a sound report for the active reel folder for all applicable drives.
 - ▶ Click the Generate Sound Report icon (located between the Name and Date columns). This creates a sound report from a specific drive and reel folder.
2. When the Sound Report Created message appears, click OK. The message will appear slightly different, as shown below, depending on whether the report was created across multiple drives or in a single directory.



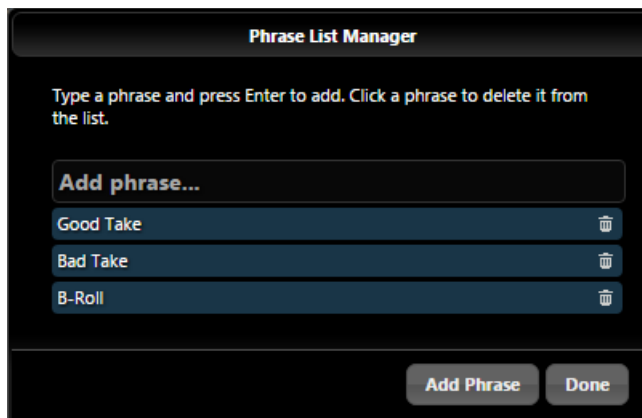
3. Click Download CSV from the message dialog box to download the file immediately to the computer. The file will be stored in the folder to which you have your browser to download.

To manage phrase lists from PIXNET:

1. Click the File Storage tab.
2. Scroll to the bottom of the screen and click the Phrase List Manager button.
3. Enter a phrase and click Add Phrase to create a list of phrases, commonly used in metadata entry.



4. (Optional) From an existing list, click the Trashcan icon next to the phrase you want to delete.



- Click Done when finished. Phrases from the list will be available to add to the Notes field for each take when using the Metadata Edit screen on the PIX 270i (or PIX 260i).

Seamless Playback [270]

This version of firmware supports seamless playback of video and audio across files, which is ideal for playback of file split recordings or playlists. This feature does require that the files are of the same file res/rate and codec.

New TIMECODE/SYNC Options [270]

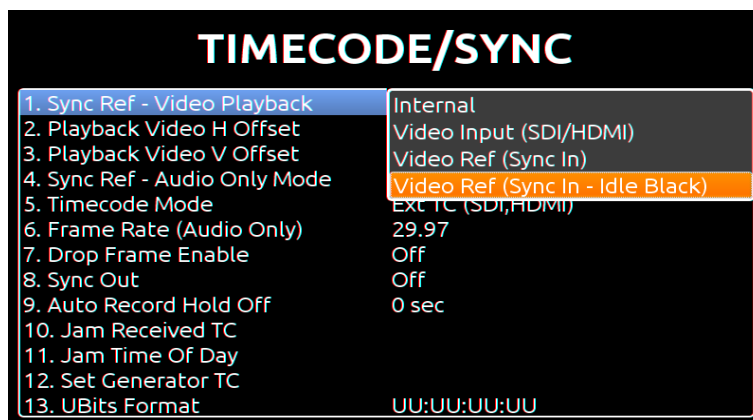
In this version of firmware, several new options have been added to the TIMECODE/SYNC submenu.

The first option, called Video Ref (Sync In - Idle Black), is useful for broadcast facilities that need to output genlocked black raster to SDI and HDMI while playback is stopped. Video output is synchronous with Sync In during playback and stop. In stop mode, black is output from the SDI and HDMI outputs. This mode maintains a glitch-free synchronous output when switching between stop and playback.

The other two new options let end-users set timing offset of video playback (horizontal and/or vertical) relative to incoming sync input (house reference). These two new options are only enabled if Sync Ref – Video Playback is set to either Video Ref (Sync In - Idle Black) or Video Ref (Sync In).

To enable output of genlocked black raster when idle:

- Press the MENU button.
- Select TIMECODE/SYNC > Sync Ref – Video Playback.
- Select Video Ref (Sync In - Idle Black).



To set horizontal or vertical timing offset:

1. Ensure that Sync Ref – Video Playback is set to either Video Ref (Sync In - Idle Black) or Video Ref (Sync In).
2. Press the MENU button.
3. Do one or both of the following:
 - Select TIMECODE/SYNC > H Sync Offset.
 - Select TIMECODE/SYNC > V Sync Offset.
4. Set a new line and/or pixel value for timing offset from house reference.

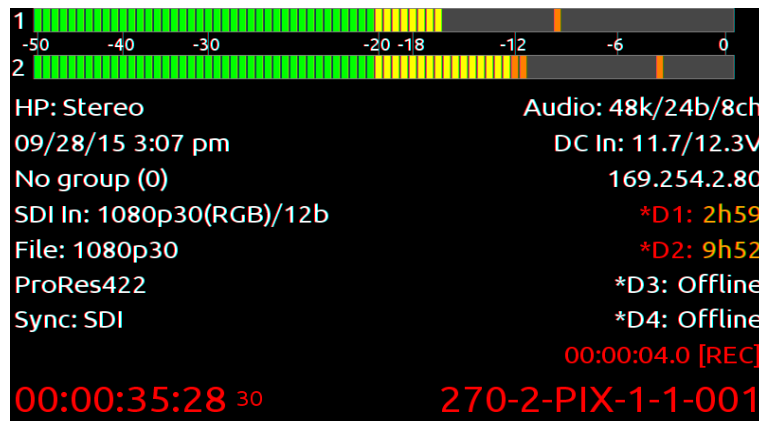
Displaying External DC Status [250, 260, 270]

This version of firmware enables the display of external DC input voltage level(s).

To show or hide display of external DC status:

1. Press the MENU button.
2. Select ON-SCREEN DISPLAY > Ext DC Status.
3. Do one of the following:
 - Select On to display external DC input voltage levels.
 - Select Off to hide external DC input voltage levels.

The PIX 250i and PIX 260i will display values for a single DC input, but since the PIX 270i has two such inputs, it will display two levels separated by a slash, as shown in the following image; the values are located on the right side of the screen and labeled DC In.

**Firmware Changes**

This section provides information on changes made to existing features in this version of firmware. The PIX recorders to which these changes apply are listed after each bullet point in brackets.

- Updated version of Dante hardware (Brooklyn II) firmware to v3.8.0.24 [260, 270]
- Faster Ethernet file transfer. [250, 260, 270]
- Added notifications to alert user that a mounted drive was not formatted by a PIX recorder, and if there has been a drive error at start of recording. [250, 260, 270]
- Improvements to grouping reliability especially when using static IPs. [250, 260, 270]
- General improvements in handling Dante stream assignments and events. [260, 270]
- Support for playback of non-native ProRes and DNxHD QuickTime .mov files with up to 16 audio streams from NLEs including Avid, Final Cut Pro, and Adobe Premier. [250, 260, 270]
- Audio screen's track highlight change to make it easier to see if a track is armed. [250, 260, 270]
- LTC embedded in line 10 and VITC in lines 9 and 571 of SDI stream. [250, 260, 270]